

SUPPLEMENTARY FILE

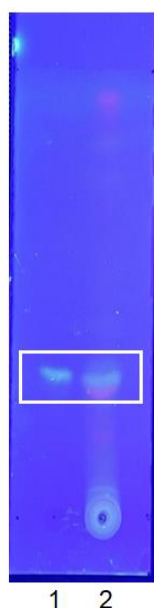


Figure 1. Thin layer chromatography results of *A. graveolens* ethanolic-extract (EES). The TLC plate was observed under UV 366 nm. Column 1 is standard apigenin, column 2 is EES. The mobile phase is mix of toluene:ethyl acetate:formic acid (7:2.5:0.5). White box highlight the position of apigenin standard and in EES with retention factor (Rf) around 0.31.

Table I. Scoring index to determine colitis severity adapted from previous study by (Tian et al., 2016)

| Score | Body weight loss (%) | Feces consistency | Blood presence in the feces |
|-------|----------------------|---------------------|-----------------------------|
| 0 | <1 | Normal | Negative |
| 1 | 1 - 5 | <i>Loose stools</i> | Negative |
| 2 | 5 - 10 | <i>Loose stools</i> | Positive |
| 3 | 10 - 15 | Diarrhea | Positive |
| 4 | >15 | Diarrhea | <i>Gross Bleeding</i> |

Table II. Colon microscopic condition scoring (adapted from (Minaiyan et al., 2014)

| Histopathological changes | Score |
|------------------------------------|-------|
| Loss of mucosal layer | 0 - 3 |
| Crypt erosion | 0 - 3 |
| Muscle layer thickness | 0 - 3 |
| infiltration of inflammatory cells | 0 - 3 |
| Goblet cell depletion | 0 - 3 |