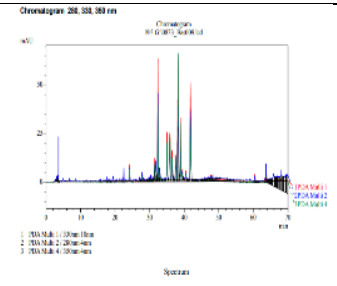


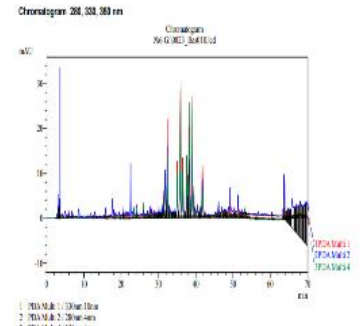
SUPPLEMENTARY DATA

| No | The stage I- sprouting (02.05.) | Stage №3, 4 - branching, inflorescence formation (05.06.) | Herbarium samples | Spectra samples |
|----|------------------------------------|---|-------------------|---|
| 1 | | | | <p>Chromatogram 201, 200, 200 nm</p> <p>1. PISA.M.B.1.13.05.04.00 2. PISA.M.B.2.13.05.04.00 3. PISA.M.B.4.13.05.04.00</p> |
| 2 | | | | <p>Chromatogram 202, 200, 200 nm</p> <p>1. PISA.M.B.1.13.05.04.00 2. PISA.M.B.2.13.05.04.00 3. PISA.M.B.4.13.05.04.00</p> |
| 3 | | | | <p>Chromatogram 203, 200, 200 nm</p> <p>1. PISA.M.B.1.13.05.04.00 2. PISA.M.B.2.13.05.04.00 3. PISA.M.B.4.13.05.04.00</p> |
| 4 | | | | <p>Chromatogram 204, 200, 200 nm</p> <p>1. PISA.M.B.1.13.05.04.00 2. PISA.M.B.2.13.05.04.00 3. PISA.M.B.4.13.05.04.00</p> |

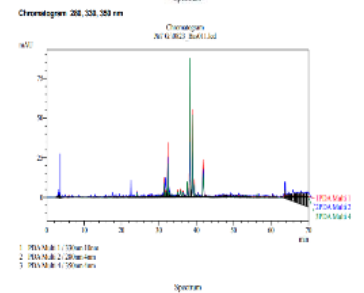
5



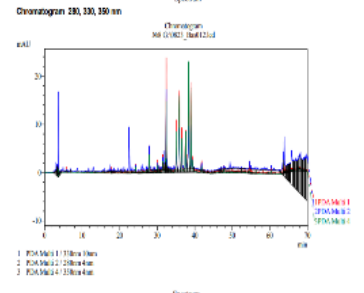
6



7



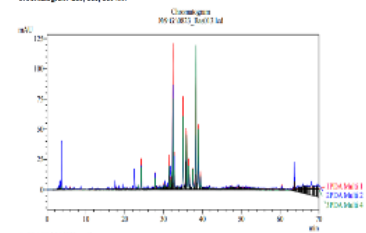
8



9



Chronogram 200, 330, 350 nm

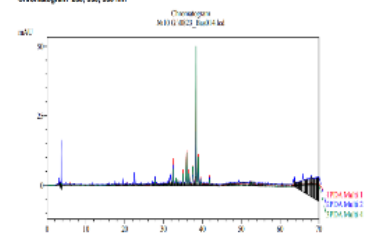


1. PDA.M.011.120nm-10nm
2. PDA.M.012.120nm-10nm
3. PDA.M.014.120nm-10nm

10



Chronogram 200, 330, 350 nm

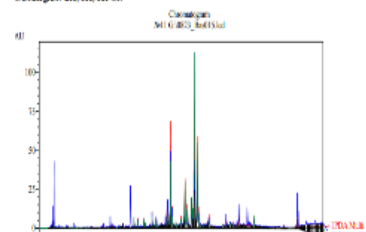


1. PDA.M.011.120nm-10nm
2. PDA.M.012.120nm-10nm
3. PDA.M.014.120nm-10nm

11



Chronogram 200, 330, 350 nm

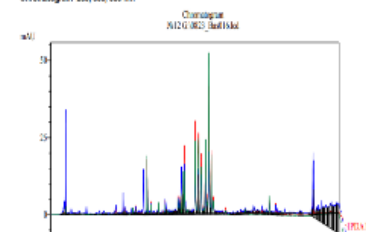


1. PDA.M.011.120nm-10nm
2. PDA.M.012.120nm-10nm
3. PDA.M.014.120nm-10nm

12



Chronogram 200, 330, 350 nm



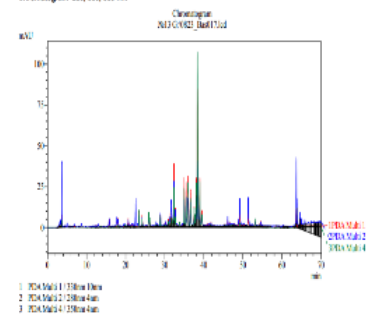
1. PDA.M.011.120nm-10nm
2. PDA.M.012.120nm-10nm
3. PDA.M.014.120nm-10nm

Spectrum

13



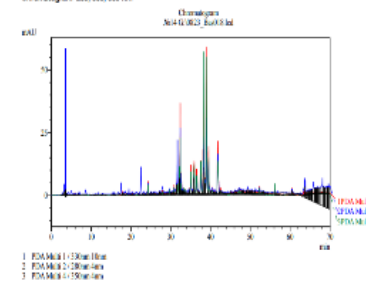
Chromatogram 200, 330, 380 nm



14



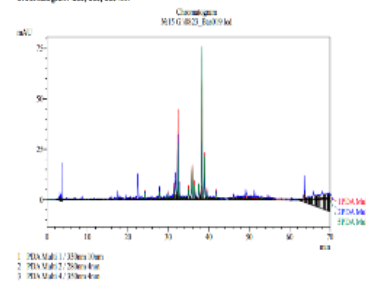
Chromatogram 200, 330, 380 nm



15



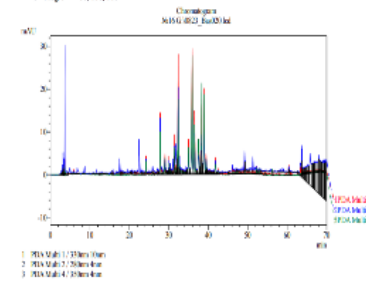
Chromatogram 200, 330, 380 nm



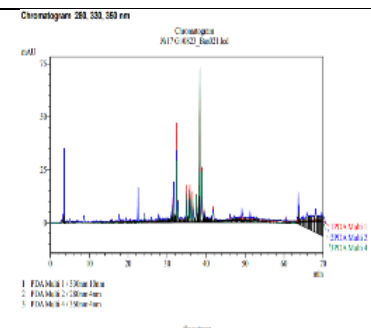
16



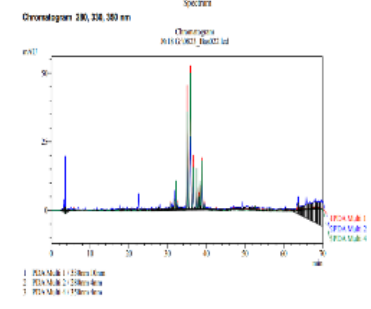
Chromatogram 200, 330, 380 nm



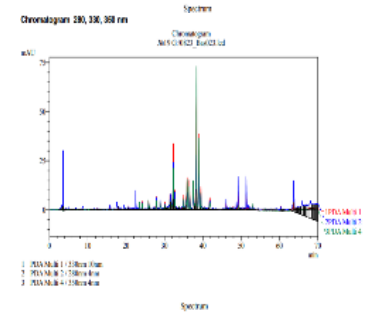
17



18



19



20

