

Supplementary Data

This supplementary data is a part of paper entitled "Superparamagnetic Composite of Magnetite-CTAB as an Efficient Adsorbent for Methyl Orange".

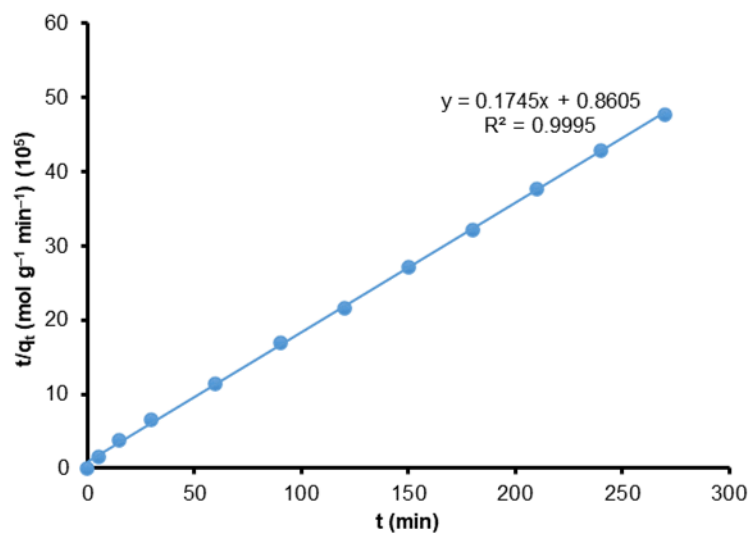


Fig S1. The curve of t/q_t vs. t is based on the Ho and McKay kinetic equations

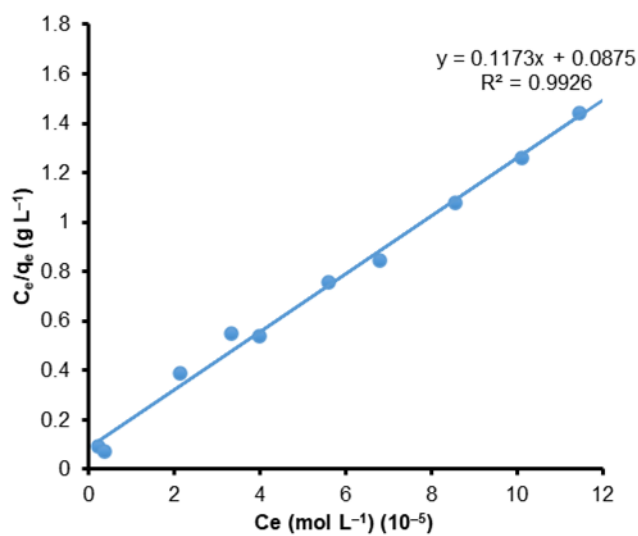


Fig S2. The linear curve of C_e/q_e vs. C_e related with Langmuir isotherms

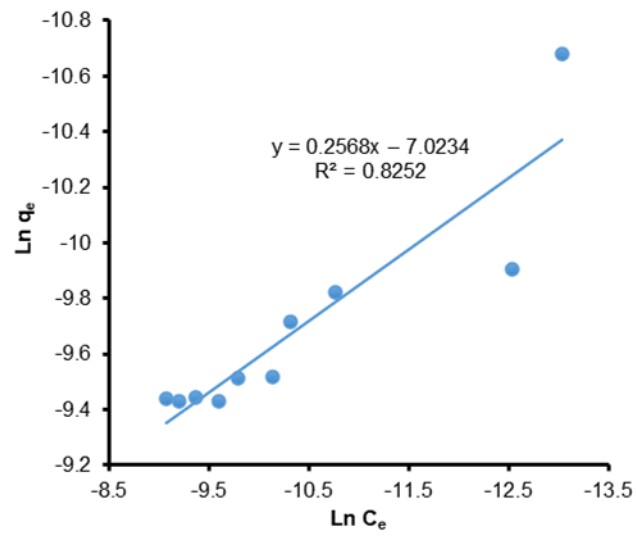


Fig S3. The linear curve of C_e/q_e vs. C_e related with Langmuir isotherms



Fig S4. Adsorbent recovery test with an external magnetic field